

	Stage Audio Equipment Rack (4 pcs Cat5e Cable from Control Room) (2000 VA (Net load) 15A Power Socket x 3) Stage Audio Equipment Rack will install at other finished floor level or As Specified.
	Control Room Audio Equipment Rack (4 pcs Cat5e Cable to Stage Audio Equipment Rack) (2000 VA (Net load) 15A Power Socket x 3) Control Room Audio Equipment Rack will install at other finished floor level or As Specified.
	42U Video Equipment Rack (25 pcs Cat5e Cable / 6 pcs RS232 Cable from Control Room) (2000 VA (Net load) 15A Power Socket x 3) 42U Video Equipment Rack will install at other finished floor level or As Specified.
	42U Lighting Equipment Rack (4 pcs 4 core mic cable from Control Room Lighting Panel) (Mini load 600VA 3P-W x 3) 42U Lighting Equipment Rack will install at other finished floor level or As Specified.
	Computer Light (2 core mic cable 006.2mm x 2) for Control Room Computer Light will install at 7400mm after finished floor level or As Specified. (Power 270W)
HC 1-2	House Curtain with Track House Curtain Driving Machine
SC 1-2	Side Curtain
TES	Teaser
TD 1-2	Tomteator
BD 1-3	Border
LG 1-8	Leg Curtain
MC	Mid-Curtain Mid-Curtain Driving Machine
CYC	Cyclorama Cyclorama Roller
LB 1-4	Rigging Bar
SB 1-5	Rigging Bar
	LIGHTING EQUIPMENT 220/230V 288VA (24 WRE) RIGGING EQUIPMENT 380V (3PHASE, 3 WRE) 550VA
	Side Lighting Bar (3 core Electrical cable 006.2mm x 18) for Dimmer Room Side Lighting Bar will install at 9800mm after finished floor level or As Specified.

T-B

LP/ES	(50/50)x100 2/C
SS	75x75
ST	75x75

AB = 48814

R-L

LP/ES	(50/50)x100 2/C
SS	75x75
ST	75x75

F/B  
LP/ES (150/50)x100 2/C  
100mm CABLE TRAY FOR LIGHTNING  
F/A & DN TO G/F

L-R

LP/ES	(50/50)x100 2/C
SS	75x75
ST	75x75
LT	75x75

LIGHTNING DOWN CONDUCTOR  
(COAXIAL CABLE)  
F/A & TURN AT H/L  
IN 100mm CABLE TRAY

600W CABLE TRAY  
C/W SUNSCREEN COVER

WL 50x50

WL 50x50

FROM BELOW  
(LIGHTNING COAXIAL CABLE)

R-L

LP	150x150
ELV	100x100

FOR GROUP CONTROL OF LTG. SW.  
OF ASSEMBLY HALL 'T'

LTG. SW. FOR  
ASSEMBLY HALL 'T'

T-B

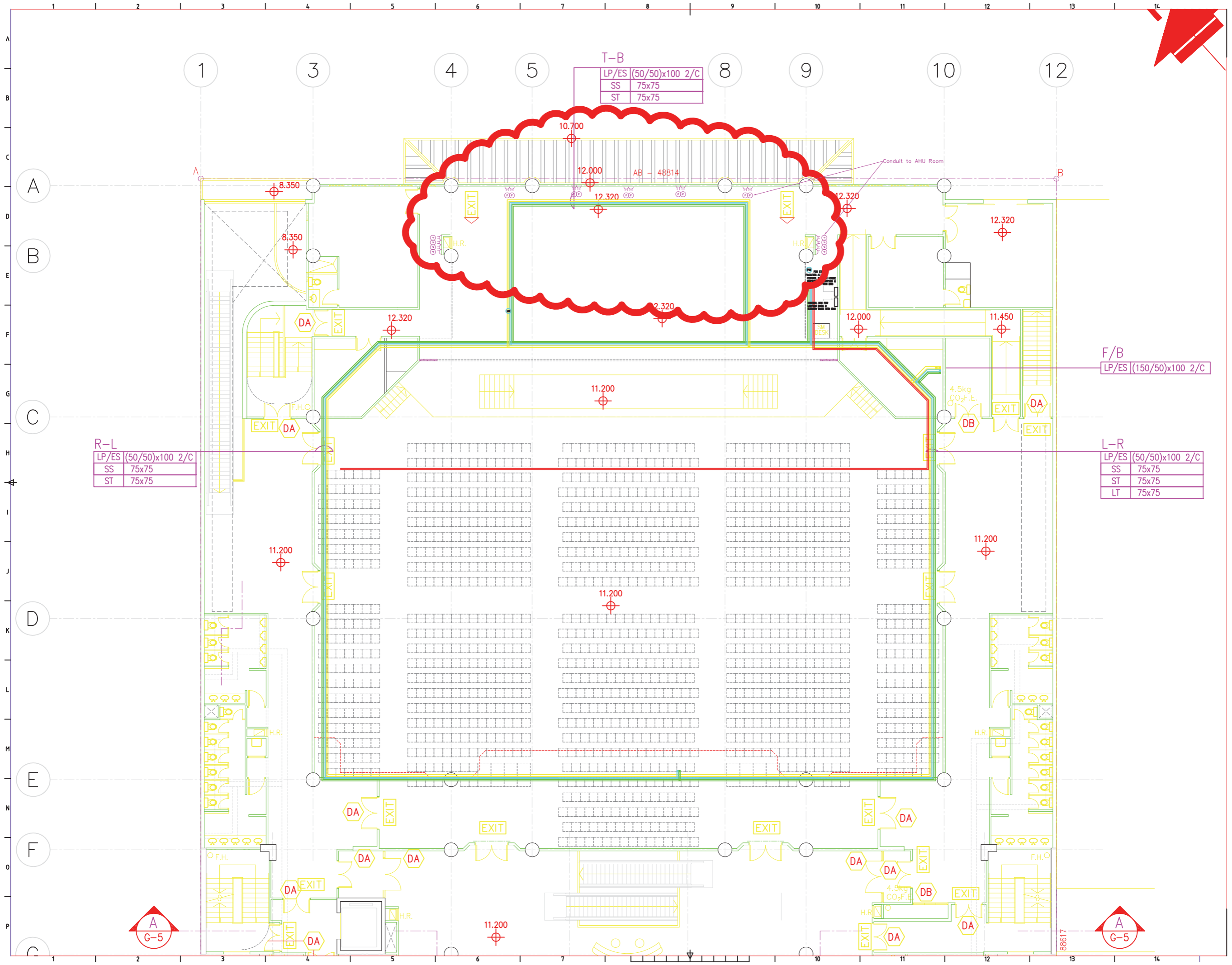
BC	100x100
LP/ES	(150/50)x100 2/C
D/T	100x100

F/B

BC	100x100
LP/ES	(150/50)x100 2/C
D/T	100x100

DA = 86466

BC = 88617



T-B

LP/ES	(50/50)x100 2/C
SS	75x75
ST	75x75

R-L

LP/ES	(50/50)x100 2/C
SS	75x75
ST	75x75

F/B

LP/ES	(150/50)x100 2/C
-------	------------------

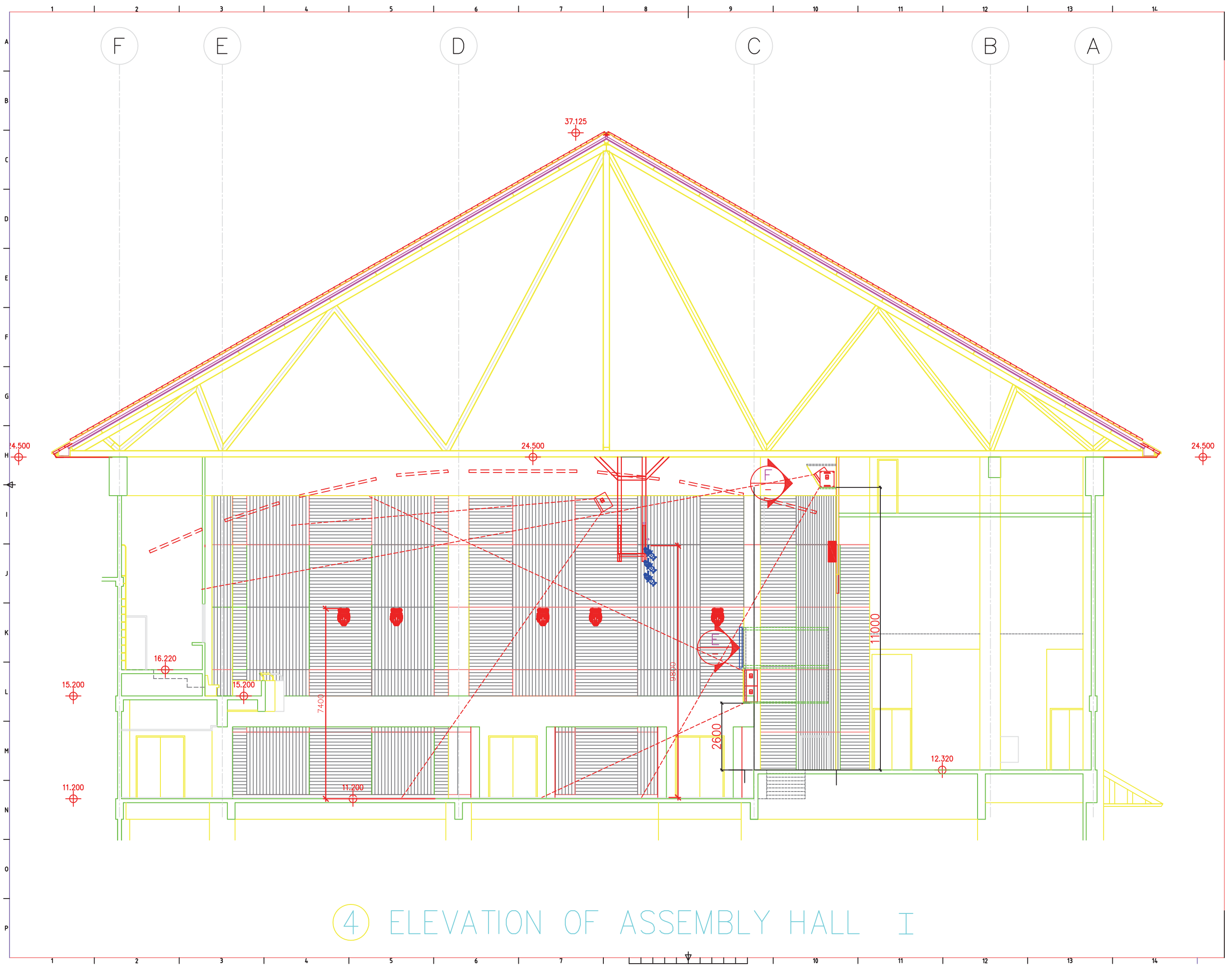
L-R

LP/ES	(50/50)x100 2/C
SS	75x75
ST	75x75
LT	75x75

AB = 48814

88617





④ ELEVATION OF ASSEMBLY HALL I